

Ngā Kaiwhiri o
Te Taura Whiri i te Reo Māori



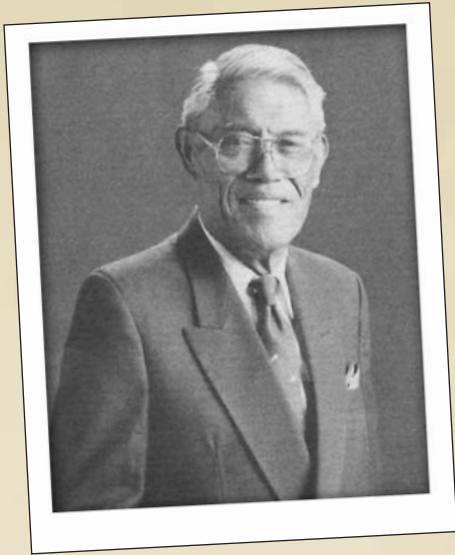
'Kia ita!'

Mai i te tau 1987 ki te tau 2010

E kore e wareware

Tā Kīngi Matutaera Īhaka (1921 – 1993)

nā Ahorangi Timoti Kāretu (He Muka - Putanga [6] 2)



*Tūperepere kau ana ngā wai o Te Whanga-nui-a-Tara,
Engari ia koe, e Matu,
Nei rā tō waka kua marewa ki ngā wai tokitoki,
Ki ngā hau tāhengihengi, ki te āio mōwai rokiroki.*

*Kōrangirangi ana tērā te manawa, nawe ana tērā te
ngākau i te haenga a mate.*

"Rā ō tohu kua kitea noatia atu, e Matu, engari ahakoa tērā i tohe tonu koe, i whakatumatuma tonu koe, i whakapātaritari tonu koe me tō mōhio tonu i te mutunga iho ko Aituā ka toa. Nā rātou hoki te kī e kore e taea ngā huata a Aituā te kaupare, te karo, ā, ko koe tēnā i roto i te rā nei.

Hoki ana ngā mahara ki ngā nohonga tahitanga, ki ngā katanga tahitanga, ki ngā tohenga tahitanga, ki ngā hakanga tahitanga, ki ngā matapakinga tahitanga, ki ngā whakataunga tahitanga. Ka kohia ake aua mahara ko tōna otinga atu ko te matawaia o te kamo, ko te tārere o te roimata, kei hea kē hoki i tua atu?

Ko ngā waka maha i whakatereta ai, i hoea ai e koe kua pōteretere noa. Ko te hāhi matua tēnā, ko ngā whakataetae matua o te motu tēnā, ko te reo Māori tēnā, ko ngā tikanga Māori tēnā i kī mai ai koe ki a au i roto i tētahi o ō tuinga mai, "me te kotiti o te reo, te pāpaku o ngā whakaaro me te kuware ki ngā tikanga a ngā mātua tūpuna."

Te hāngai pū o ēnā kōrero engari kei hea te momo kaumātua pēnā i a koe nā hei whakaputa tonu i ēnā kōrero kia hoki anō ai te ao Māori ki te ara tika e mau pai ai te reo me ngā tikanga? Ko tēnā momo i a koe nā kua kore, kei te hinengaro te whakaaro kua puta tonu mai i te waha. Kāore he tiroiro, kāore he tītahataha, kotahi atu kia titi tonu!

Mā muri nei pea e kawē tāu i manako ai, tāu i popore ai, tāu i inoi ai. Heoi anō tā mātou he whakakaha, he whakamomori me kore e tutuki. Ka hikohiko te uira ki runga i ngā hiwi, ko te tohu o te mate, ā, nā rā ia, e Matu, ko koe.

Kāti, takahia te ara kua oti kē noa atu i a nunui mā, i a roroa mā te para, okioki mai i roto i te Ariki."

*"Piko nei te mātenga,
Tau mai ko te pōuri nui."*

Ngāhinatūrae Tūteao Te Uira (1932 – 2007)

nā Ahorangi Te Wharehuia Milroy (He Muka – Putanga 20 [2] 2007)

"I whānau mai te wahine nei i Tahāroa, takiwā ki te rohe o Kāwhia ki roto o Tainui i te 4 o Pipiri i te tau 1932. I kuraina ki Tahāroa ka whakaotia atu e ia ōna rā kura ki te kura mō ngā kōtiro Māori i Kuini Wikitōria ki Tāmaki makau rau. Otirā, ko ia te puhitaeoreore o taua kura, te mātāmua o ngā kōtiro katoa o taua kura ā-mātauranga, ā-ārahi tamāhine hoki. I roto i a ia ngā ira o te kähui rangatira e rere ana. Mai i reira, ka uru ki ngā mahi kāwanatanga tau rawa atu ana ki roto i Te Tari Māori o ngā tau o te rima tekau o tērā rau tau. I reira ia e whakangungua ana ki ngā parehua o ērā momo whakahaere, i kite ai, i mōhio ai ki ngā mahi hei whakawhanake i te ora o te iwi Māori. I kite anō ia i ngā mate e whakapā mai ana ki te iwi i te ao hurihuri e whakaekē ana i ōna momo āhuatanga ki te tangata.

I te tau 1956, ka whakawhiwhia ki te tūranga o te Āpiha Toko i te Ora o Te Tari Māori. Ko wai kāore i mōhio ki te wahine nei? Nā roto mai o ōna hīkoinga i taua mahi ka horapa te rongo ki ngā tōpito o te ao Māori. He wahine tuarā whānui, he wahine marae, he wahine kua mahue mai i a ia he tapuwae e kore pea e taea te whakakapi i tēnei wā.

He tohu rongonui tonu i whakawhiwhia ki a ia i tōna wā, arā, i riro mai i a ia te tohu Diploma of Social Science, Te Tohu Kaiwhakamāori/whakapākehā, te University of Waikato Inaugural Lifetime Achievement Award mō tōna hiranga mātauranga, i tukua he Foreign Leadership Grant ki a ia e te kāwanatanga o Amerika.

Atu i ēnei mahi i tohua anō ia e te wā kia mahi i roto i Te Tari Toko i te Ora, otirā i ngā tūranga matua tonu i te mea e kitea ana ōna pūkenga ki te aronui ki ngā tutukinga waewae o te iwi Māori i ngā poro o ā rātua nā mahinga. I noho anō ia hei kaiārahi, hei kaiako i ngā tamariki e whakauru ana ki ngā mahi toko i te ora. He tohu anō tēnei o te aronui o ngā upoko o te ao Pākehā o te ao Māori anō hoki ki te ngaio o tēnei wahine ki te mahi i roto i ngā hāpori Māori, Pākehā hoki.

Ko te pou matua o roto i ōna whakaaro ki tōku mōhio ki a ia, ko te kaupapa o te Kīngitanga. He nui rawa anō ngā wā i haere ai ia i te taha o Te Arikiniui, o Te Atairangikāhu i āna hāere ahakoa i ngā motu o Aotearoa, i te ao whānui rānei. Ko ia ka whakamau ōna whakaaro kia noho tonu ia ki te hāpai, ki te waha i ngā wāhi o ngā mahi e riro ai, e hoatu ai rānei māna aua mahi. I whāngaihia ia ki ngā mānga kai, ki ngā kai mārō hoki o ōna hapū, o ōna iwi, hei konei ka



taea te kī, "he tāonga mai tawhiti". Nō konā ka noho te pūmautanga ki āna i whakapono ai, i piripono ai hoki ki te Kīngitanga. He wahine tapatahi te ngākau.

Ko taku tino piringa tata ki tēnei wahine i a māua e mahi ana hei mema o Te Taura Whiri i te Reo Māori. I reira ahau ka kite i ngā pūmanawa, i te mōhio o te wahine nei ki te wetewete, ki te tātari i ngā whakaaro e rārangi ai ki mua i tōna aroaro. Nāna tāna mahi! Ka mahi anō ia ki te kawē i ngā kaupapa aroā o roto i ngā kura reo i whakatūria ai e Te Taura Whiri. Ki te hokia ngā pukapuka o aua kura reo o roto i ngā tekau tau ka hori, nuku noa atu rānei, e kore e hapa kei reira tōna ingoa e whata mai ana. Āe rā he wahine ia nō tōna wā.

Ko te wahine nei ko 'Ōna', he wahine mō ngā āhuatanga katoa a te wahine ahakoa he aha te mahi. Ka hiahia ki te whakaputa i ōna whakaaro, ahakoa he aha, ki a wai rānei, e kore e wehi, kāore hoki e huna. Koirā tōna āhua. Kāore ia i kōrero i tōna mate nāna nei te wahine nei i tango atu, engari ka aronui tonu ki ngā mahi kei ana ringa e noho ana. Ko tana tūmanako kia tutuki i a ia te whakarārangi i ngā kōrero o roto i ngā rātaka, wātaka hoki a tōna rangatira wahine a Te Pūea Hērangi. Heoi, kei te wā e kitea ai tōna huanga mai ki te ao mārama."

*"Nō reira e te kura kua pupuni ki runga ki a Rehua
Tomokia te whare o Miru ki te pō
Tākiri manawa o Rangawhenua
Ka aranga te haunui nō apaaparangi
Tangohia mai ngā whatu i reira
Ka tū ki waho rā te whatu kai tangata
Ka noho ki runga rā te whatu kai ariki
Ko Kākai te rangi kei konā ngā Kīngi
Kei konā tō Arikiniui a Te Atairangikāhu
Ko kōrua ēnā kua tae atu ki Tūpaengarau."*

Miria Simpson (1922 - 2002)

nā Ahorangi Timoti Kāretu (He Muka, Hōtoke/Takuru 2002)

"E kui Miria, matawaia ana rā a kamo i te hokinga o mahara ki ngā wā o te noho tahitanga, o te kata tahitanga, o te tohe tahitanga – ka mutu he nui tonu ngā wā pērā engari i te taunga anō o te puehu, tau ana anō hoki ko mauri.

1957 te tau i tūtaki tuatahi ai tāua. Ko taua tau rā hoki tōku nā tau tuatahi i te Whare Wānanga o Wikitoria, ā, ko tōu nā tau tuatahi anō hoki ki reira mahi ai. Kei noho te ākonga Māori ka hipa i te kuaha o tō tari pakē mai ana tērā tō waha me te aha, ko te ingoa kārangaranga mōu i waenga i a mātou, i ngā ākonga, ko 'The Voice.' He aha ai? He rangona nō tō reo i tawhiti rā anō e pūhohe ana, e tīoro ana, e tātā ana, engari e tātā ana nā runga i te aroha.



Nā wai rā haere ana koe i āu nā haere ko au hoki ki āku, ā, mea rawa ake ka tūtaki anō tāua i Rānana, i Ingarangi, i te Whare Wānanga o Waikato, ā, oti atu ana ki Te Taura Whiri i te Reo Māori. I a au ka wehe mai i reira ka noho atu ko koe hei kanohi pakeke mō te Poari hou, ā hinga nei koe.

Otirā, ko te taura paihere i a tāua ko te reo, ā, whawhai tahi ana tāua kia tika, kia eke. Ahakoa te kore i aro mai o te ao Māori whānui, ko tāua ēnā e whakamomori rā, e nonoke rā mei kore noa e tūpono ka areare mai ngā taringa o te ao Māori.

Kāti, ko koe tēnā kua tau atu ki te ngeangea, ki te makiu i te nguenguetanga o te tangata. Tērā pea kua kore i nguengue i nāiane i te mea ko koe kua tae atu ki te whakaohoho mai anō i a rātou! Waiho mai ko au ki muri nei ki tā tāua taonga i te taha o te rangatahi whakaaro nui ki te ora, ki te mau o tō tāua reo haere ake nei.

Moe mai rā i te moenga ka moea nei e tātou katoa ā tōna wā. Ko āu ōhākī ka mau tonu i a koe i kī rā 'Arā ngā whetū e kapokapo mai rā, kapohia atu kei whakawhenua noa.' Kia tīkina atu i te waiata a Kōhine Pōnika,

*“E te rangatahi maranga mai
Nōu te ao i tēnei wā
E tū”*

Koirā katoa āu nā whakahau, āu nā whakamāherehere ki te rangatahi Māori. Kei hea he whakamaumaratanga ki a koe i tua atu mēnā ki te tahuri mai te ao Māori?

Ko te pō rā ki a koe, e kui e, ko te pō rā ki a koe. Haere rā, haere atu rā."

Te Kāhui Kaiwhiri

Nau mai, haere atu tēnei whakaaturanga kawae aroha, kawae mihi ki te hunga pūmau ki tō tātou reo Rangatira, ki ngā kaiwhiri o mua, o nāianei, tēnā koutou katoa.

Ko Te Taura Whiri i te Reo Māori he mea whakatū i te 1 o ngā rā o Ākuhata 1987, i raro i te maru o Te Ture mō te Reo Māori, hei whakahau i te iwi whānui o Aotearoa kia aro nui mai ki te reo, ā, hei whakamahuri i ētahi o ngā tari kāwanatanga kia whakatakoto kaupapa e pā ana ki te reo. Ahakoa i whakamanatia te Tari i te marama o Ākuhata, nō te 17 rawa o ngā rā o Noema i āta wātea mai ai te Ahorangi ki te whakaoti, ki te whakatutuki haere i ngā āhuatanga e pā ana ki te whakahaere, pērā i te kimi i te nui o ngā kaimahi e rite ana me te wāhi hoki e āta noho ai mātou.

I te rā i tāia ai te kawa o te wāhi e noho nei Te Taura Whiri i te Reo Māori, i tae mai te Kāwana-Tianara, a Tā Pāora Reeves, te Minita Māori, a Koro Wetere, te Tumuaki o te Tari Māori, a Tāmati Reedy, me te huhua noa ki te whakanui i Te Taura Whiri i te Reo Māori me tōna kāinga noho.



This march in Wellington during Māori Language Week in 1980 sought equal status for te reo Māori in New Zealand, and for its use to be encouraged. Dominion Post Collection, National Library of New Zealand Te Puna Mātauranga o Aotearoa, Alexander Turnbull Library, Wellington (Ref: EP/1980/2470/20A)

Te Poari Tuatahi (1987 – 1993)

Ko te hunga tuatahi i whakatatūtia mō te kōmihana o Te Taura Whiri i te Reo Māori.

Ngā Toihau

- Ahorangi Timoti S. Kāretu (*mai i te 1 o Hereturikōkā 1987 ki te 30 o Mahuru 1990*)
 - Ātirikona Tā Kīngi M. Īhaka (*mai i te 30 o Mahuru 1990 ki te 31 o Kohitātea 1992*)
- *(i te matenga o Tā Kīngi Īhaka, i hoki atu a Ahorangi Timoti S. Kāretu ki te tūranga Toihau)*
- Ahorangi Timoti S. Kāretu (*mai i te 22 o Pipiri 1992 ki te Hōngongoi 1999*)



Tākuta Ray Harlow, Ahorangi Timoti Kāretu, Tā Kīngi M. Īhaka, Hon. Koro Wetere, Kāterina Te Heikōkō Mataira, Ānita Moke.

Ngā Kaiwhiri

- Ātirikona Tā Kīngi M. Īhaka (*mai i te 1 o Hereturikōkā 1987 ki te 30 o Mahuru 1990*)
- Ahorangi Timoti S. Kāretu (*mai i te 30 o Mahuru 1990 ki te 19 o Pipiri 1992*)
- Tākuta Ray Harlow
- Ānita Moke
- Kāterina Te Heikōkō Mataira



Kāterina Te Heikōkō Mataira, Tākuta Ray Harlow, Mātene Rūāwai, Ahorangi Timoti Kāretu, Tā Kīngi M. Īhaka, Ānita Moke.

1988 – Ngā Uaratanga

He whai wāhi ki tētahi nohoanga tangata o Aotearoa nei e ōrite ana te mana o te reo Māori me te reo Pākehā ki tā Te Ture titiro, ā, e wātea ana ngā tāngata katoa ki te kōrero Māori, Pākehā rānei, i ngā huihuinga tāngata katoa; he whakatairanga, he whakaū i te reo Māori hei reo e kōrerotia ana i ngā wā katoa kia ora tonu ai.

1988 – Whāinga Poto

He whakatairanga i te reo Māori, he whakahau hoki i te iwi kia kōrero tonutia te reo otirā, kia kaha ake te kōrerotia e te iwi Māori anō.

Te Poari Tuarua (1992 – 1999)



Te Waihoroi Shortland, Miria Simpson, Ahorangi Timoti Kāretu, Ngāhinatūrae Te Uira, Ahorangi Te Wharehuia Milroy.

Te Toihau

- Ahorangi Timoti Kāretu
(mai i te 22 o Pipiri 1992 ki te Hōngongoi 1999)

Ngā Kaiwhiri

- Te Waihoroi Shortland
(mai i te 22 o Pipiri 1992 ki te Hōngongoi 1999)
- Miria Simpson
(mai i te 1 o Whiringa-ā-nuku 1993 ki te Pipiri 2002)
- Ngāhinatūrae Te Uira
(mai i te 1 o Whiringa-ā-nuku 1993 ki te Hōngongoi 1999)
- Ahorangi Te Wharehuia Milroy
(mai i te 1 o Hōngongoi 1994 ki te Hōngongoi 1999)



Ahorangi Te Wharehuia Milroy, Wayne Ngata, Te Waihoroi Shortland, Mate Kaiwai, Anita Moke, Ahorangi Timoti Kāretu

1993 – Ngā Uaratanga

Ko te uaratanga o Te Taura Whiri i te Reo Māori ko te tino whaiwāhi atu ki te tipu haere me te tino mau o te reo Māori hei reo e tino ora ana, whānui ana hoki te kōrerotia, ā, kia rite tōna tūranga i roto i te ture ki tō te reo Pākehā.

(Te Pūrongo a Te Taura Whiri i te Reo Māori, mō te tau i mutu 30 Piripi 1993)

1995 – Te Tau o Te Reo Māori

Ko te whakataukī a Te Taura Whiri i te Reo Māori mō tēnei tau i pēnei:

He tau whakatūmatohi te tau

He tau whakatītina te tau

He tau whakatau te tau

(Te Pūrongo a Te Taura Whiri i te Reo Māori, mō te tau i mutu 30 Piripi 1995)

1999 – Te Pūrongo whakamutunga a te Ahorangi Timoti Kāretu

*(*he mea tango tēnei kōrero i te Pūrongo)*

...“Ko tāku ki te hunga reo rua, ka tīmata te tangata ki te ako i te reo, me whakaaro nui ia ki te pai me te tika o tana whakahua. Ki te kore e whakaaro nuitia tēnei, kāore o rātou take ki te hunga e ako nei i a rātou. Ki te kore e riterite te whitiwhiti kōrero me ngā tāngata matatau ake, ka noho noa iho rānei ki tētahi taumata o te reo i runga i te pōhēhē kua eke, e kore e pakari ake he reo pai. Kāore e pakari ake ngā reo o te hunga i akona tuarua i te hangurunguru o ngā waha; mā te mahi me te ū ki te kaupapa anake ka taea!”

“Ko te matū o tāku e kōrero nei, kia whāia tonu e Te Taura Whiri i te Reo Māori ko te kounga, ko te pai o te reo e kōrerohia ana, e tuhia ana. Ki te kore, e kore te reo e eke ki ngā taumata e mōhio ana ka taea e ia. Ko te mahi a Te Taura Whiri i te Reo Māori, he whakatenatena, he whakahau, kia kawea ake te reo, otirā, he aha te take o te noho ki ngā tahatata, mēnā ka taea te taumata tiketike te ekea?”

“E roko marewa ana a tau 2000 i tōna pae, ā, ko te pātai, ko wai ka mōhio he aha ngā putanga kē ka pā ki te reo? Ka kī au, e kore te reo e mate, nō te mea e kore e tukuna e te hunga pūmau ki te reo kia mate ia ā-moa nei!”

Te Poari Tuatoru (1999 – 2003)

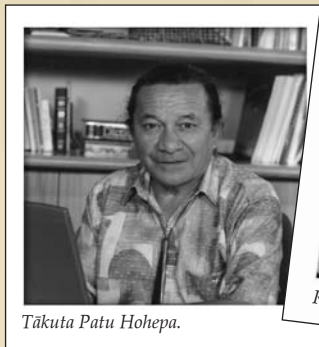


Te Toihau

- Tākuta Patu Hohepa
(mai i te Whiringa-ā-nuku 1999 ki te Hakihea 2006)

Ngā Kaiwhiri

- Quinton Hita
(mai i te Whiringa-ā-rangi 1999 ki te Mahuru 2003)
- Waireti Tait
(mai i te Whiringa-ā-rangi 1999 ki te Mahuru 2003)
- Ruka Broughton
(mai i te Whiringa-ā-rangi 1999 ki te Hōngongoi 2002)



2001 – Te Matakite

Ko te reo Māori hei reo tautahi mō te iwi Māori, hei koha anō hoki ki te ao.

2001 – He Koromakinga

Mā te Reo

Me te Reo

Mō te Reo

Ko te koromakinga a Te Taura Whiri i te Reo Māori, ko te whakatairanga, ko te tiaki, me te kauneke i te reo Māori.

2001 – Te Pūrongo a Te Toihau (a Tākuta Patu Hohepa)

I ngā rā kei te tū mai, e kore e tau te huarahi hei whai mā Te Taura Whiri i te Reo Māori mā ngā hiahia ake, mā ngā kitenga ake rānei a te Karauna. Kua mārama noa atu te meka, he oranga, he tuakiri anō hoki o te reo. I te Karauna e ruturutu ana ki te kimi ōritetanga hou ki roto i ngā hanganga ārahi ki waenganui i te iwi Māori me te Karauna, kua hoki e whakaitia te uara o ngā pokapū, pēnei i Te Taura Whiri i te Reo Māori me te taha e whakamahia ana e mātou i roto i ngā kaupapa hou, kaupapa toiriiri hoki.

(Te Pūrongo a Te Taura Whiri i te Reo Māori, mō te tau i mutu 30 Piripi 2001)

Te Poari Tuawhā (2003 – 2010)



Hana O'Regan, Iritana Tawhiwhirangi, Tākuta Patu Hohepa, Wayne Ngata, Ruakere Hond.

Ngā Kaiwhiri

- Wayne Ngata
(mai i te Mahuru 2003 ki te Paengawhāwhā 2010)
- Hana O'Regan
(mai i te Mahuru 2003 ki te Paengawhāwhā 2010)
- Iritana Tawhiwhirangi (mai i te Mahuru 2003)
- Ruakere Hond (mai i te Mahuru 2003)

Whaingā Matua

Kia ora te reo hei reo matua, hei reo kōrero mō Aotearoa.

Putanga tuatahi – he whakawātea i ngā huarahi e taea ai e ngā whānau, e ngā hapū me ngā iwi tō rātou reo te pupuri, te whakapakari.

Putanga tuarua – inā kōrero Māori te tangata, kia hāngai te whakamahi i te reo i ngā wāhi kōrero katoa.

Putanga tuatoru – ka manaakitia te reo e ngā iwi katoa o te motu, ā, ka āhei ngā tāngata katoa o Aotearoa ki te ako i te reo, kia reo rua ai.

Putanga tuawhā – ka manaaki te Kāwanatanga i te reo Māori i runga anō i te ōritetanga.

Te Tauākī a te Toihau (nā Tākuta Patu Hohepa)

"He nui ngā wawata o te iwi mō ngā mahi a Te Taura Whiri i te Reo Māori, ko te tūmanako kia kitea Te Taura Whiri i te Reo Māori e hautū ana i ngā mahi whakaora i te reo Māori i Aotearoa. Tata tonu ki te rua tekau tau e pēnei ana, i pīkauria ai e Te Taura Whiri i te Reo Māori ēnei tūmanako, ahakoa kāore i tino nui ngā pūtea whāngai i a ia. Ka nui tō māua hari ki te āhua o Te Rautaki Reo Māori hōu. I raro i te Rautaki ka riro mā Te Taura Whiri i te Reo Māori e ārahi ngā mahi whakaora reo Māori i roto i ngā tari me ngā whakahaere kāwanatanga.

Ko tō mātou matakite mō ngā rā kei mua i te aroaro, "kia ora te reo Māori hei reo matua, hei reo kōrero mō Aotearoa – Māori language is a living national taonga for all New Zealanders." Ka whakamanaia te reo Māori hei taonga, i runga anō i tā te Tiriti o Waitangi i whakaū ai, ā, ka whakatairangatia hoki hei taonga mō ngā iwi katoa o te motu. E tika ana kia kaha ake te tautoko mai, te mārama hoki o ngā tāngata katoa o Aotearoa ki ngā āhuatanga e pā ana ki te reo Māori, otirā kia huri mai tēnā tangata, tēnā tangata, ki te āwhina i te reo. Ko te pīkauranga nui pea mā Te Taura Whiri i te Reo Māori kia whiria ēnei tūmanako hei kaupapa ā-motu, kia haere whakamua ai i runga i te whakaaro kotahi. Nō reira, ko tō mātou tūmanako e te iwi, kia toa, kia hihiri te hinengaro, kia manahau ngā mahi mō ngā rā kei mua."

(Te Tauākī Whakamaunga Atu a Te Taura Whiri i te Reo Māori 2004–2008)

Ngā Toihau

- Tākuta Patu Hohepa
(mai i te Whiringa-ā-nuku 1999 ki te Hakihea 2006)
- Erima Henare (mai i te Hakihea 2006)



Tākuta Patu Hohepa, Hon. Parekura Horomia, Iritana Tawhiwhirangi, Erima Henare.

Te Poari Tuarima (2010)



Te Toihau

- Erima Henare (*mai i te Hakihea 2006*)

Ngā Kaiwhiri

- Kahurangi Iritana Tawhiwhirangi (*mai i te Mahuru 2003*)
- Ruakere Hond (*mai i te Mahuru 2003*)
- Te Awanuiārangi Black (*mai i te Paengawhāwhā 2010*)
- Evelyn M. Tobin (*mai i te Paengawhāwhā 2010*)

2008 Te Wawata

Kia haruru a Aotearoa tangata i tōna reo taketake

2008 Koromakinga

*Ka ora hei reo kōrero, hei reo tipu
Mā te kōrerotia, mā te kimi ara hou me te
whakawhānuitia e ora tonu ai te reo*

Te Tauākī a te Toihau (nā Erima Henare)

I ngā tau e 20 kua hori, mai rā anō i te tīmatatanga o Te Taura Whiri i te Reo Māori, kaha tonu te whakahaere, i te taha o te ao Māori, ki te whakarite tūāpapa pai e tīmata ai ngā mahi whakakaha ake i te ora o te reo. E eke ai ki te wāhanga whai muri, arā – te whanake ukaukatanga – me whai rā i te aronga nui me te tautoko a te ao whānui. Ki te hoki whakamuri, he nui tonu ngā mahi hei whakanui. Kua tū te heke haere o te reo Māori e ai ki ngā rangahau mohoa, ā, kua piki ngā taumata matataunga, rironga me te kōrero a te reo.

Hāunga tērā, he nui tonu ngā mahi hei whakatutuki, ā, me puta hoki ngā whakapaunga kaha a ngā tāngata katoa o Aotearoa, huri noa. Mā Te Mahere Rautaki a Te Taura Whiri i te Reo Māori 2008–2013 ka whai mātou ki te whakapiki i ā mātou āwhina ki ngā pūtahi me ngā kaupapa kōkiri a te hapori reo Māori. E whakapono ana mātou he mea tino nui te tautoko ā-hapori kia puta te reo Māori hei reo kōrero mō ia rā, ia rā, ki Aotearoa. Kei te whakaaro anō hoki mātou mō te hiahia kia hopukina, kia rauhitia, kia whanakehia ngā mita reo. He mea tino nui tēnei mō te whanaketanga tonu o te reo o te marae mō ngā whānau me ngā hapū.

E whakapono ana hoki mātou kua tae ki te wā ki te arotahi ki ngā tautoko mō te reo Māori e whai hua ana i te puta o te reo i te kāinga, ki waenganui anō i ngā pakeke me ngā tamariki hoki. Kua roa te wā e kite ana tātou i ngā hua o te ako i te reo Māori mā ngā pūtahi mātauranga, heoi anō rā, e mōhio ana mātou ehara mā tēnei anake e puta ai te reo tuku ā-reanga i te kāinga.

(Te Mahere Rautaki a Te Taura Whiri i te Reo Māori 2008–2013)

'Kia ita!'

Te Taura Whiri i te Reo Māori

MĀORI LANGUAGE COMMISSION



www.tetaurawhiri.govt.nz

Papa 14, Te Ara o Ballance | Pouaka Poutāpeta 411, Te Whanganui a Tara 6140, Aotearoa

Nama Waea 04 471 6725 | Waea Whakaahua 04 471 2768